

① TACK GLUE CONTROL PLATE & SUMP STRIP TO BUILDING BOARD. GLUE STANDOFFS

② TACK GLUE FORMERS TO BOARD WITH 3/32" SPACERS

④ GLUE NOSE PIECE

③ GLUE STIPS TO STANDOFFS; TACK GLUE TO FORMERS

TUNNEL ASSEMBLY COPY THIS PATTERN TO BUILDING BOARD

⑤ GLUE 3/16" STRIP TO STRINGERS

⑥ ASSEMBLE ALL BULKHEADS ON STRINGERS & TUNNEL ASSEMBLY

⑦ CHECK ALIGNMENT

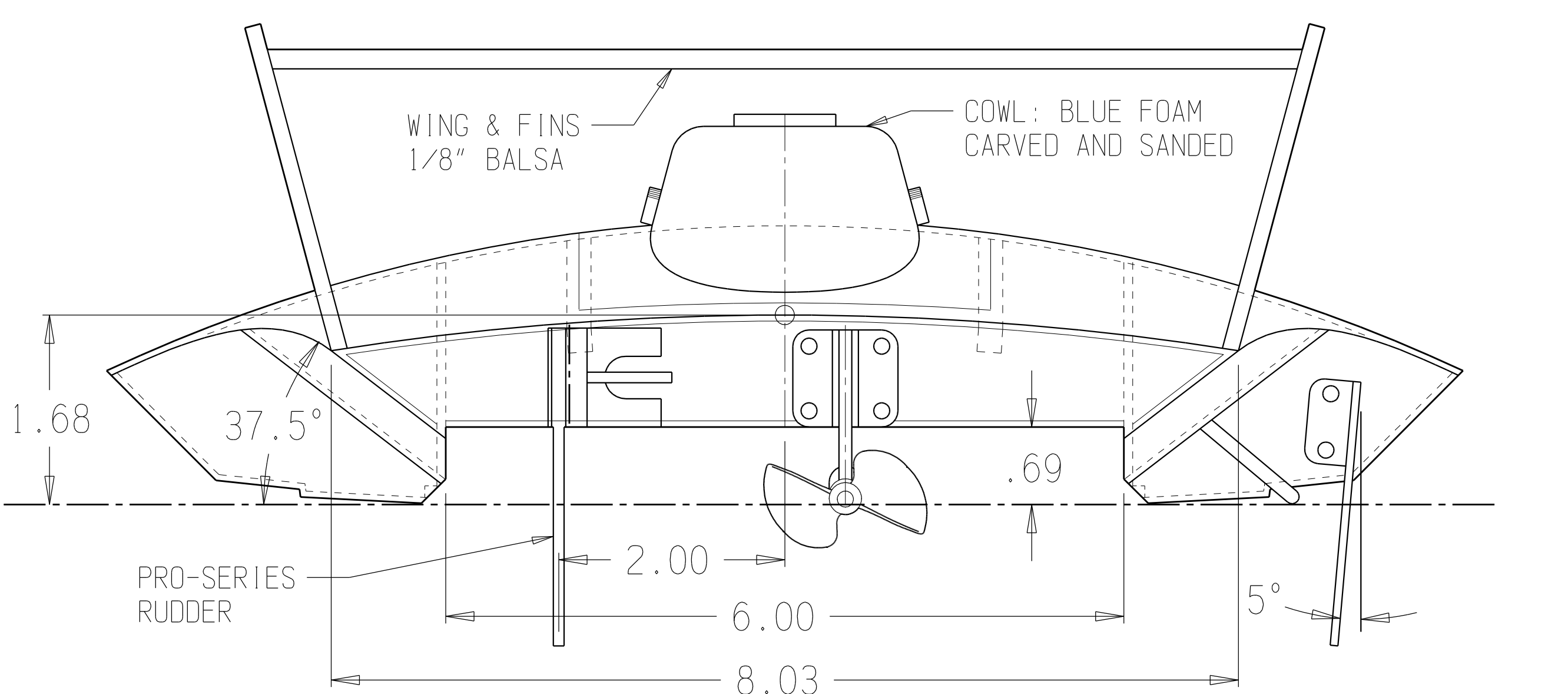
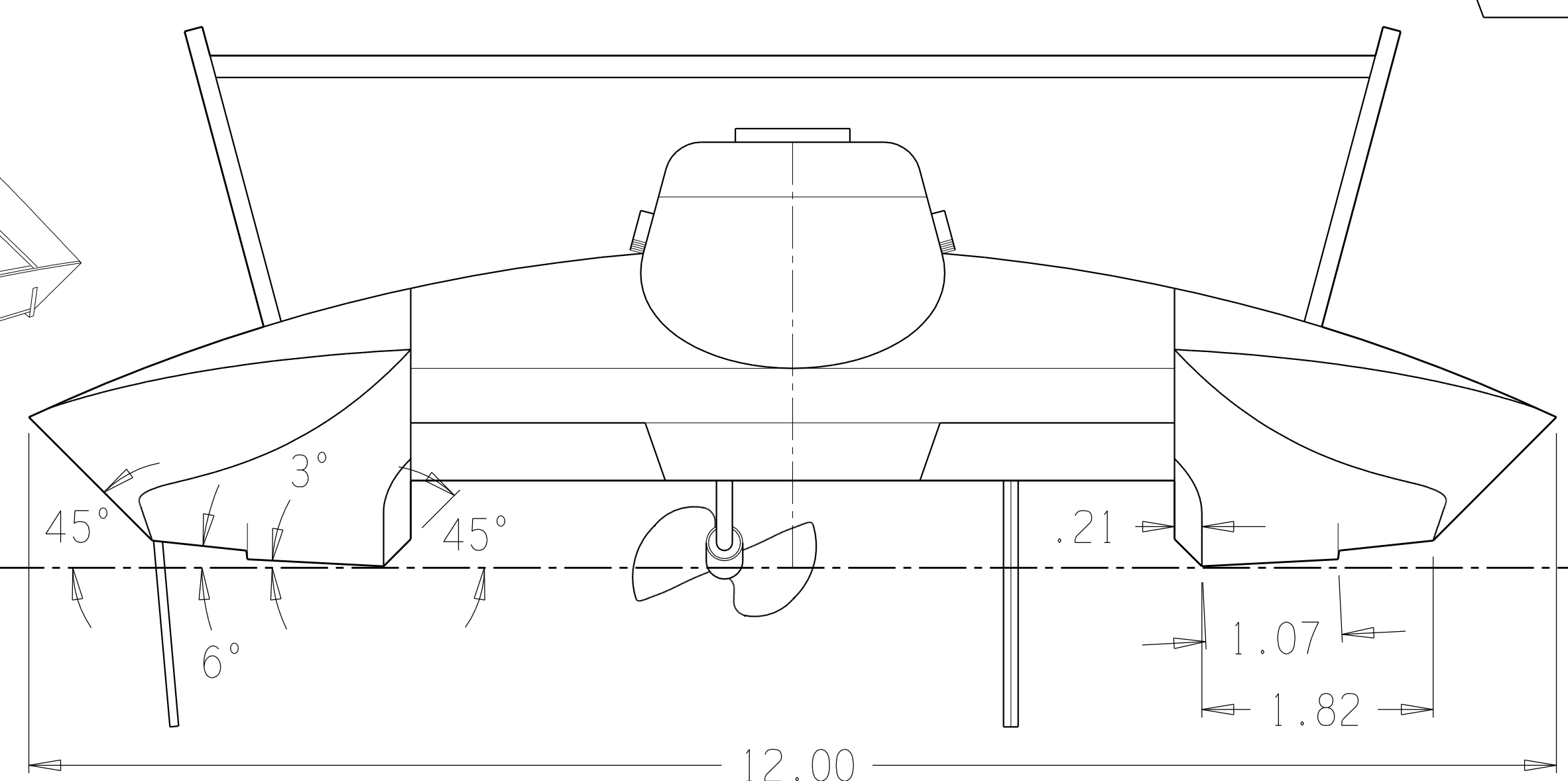
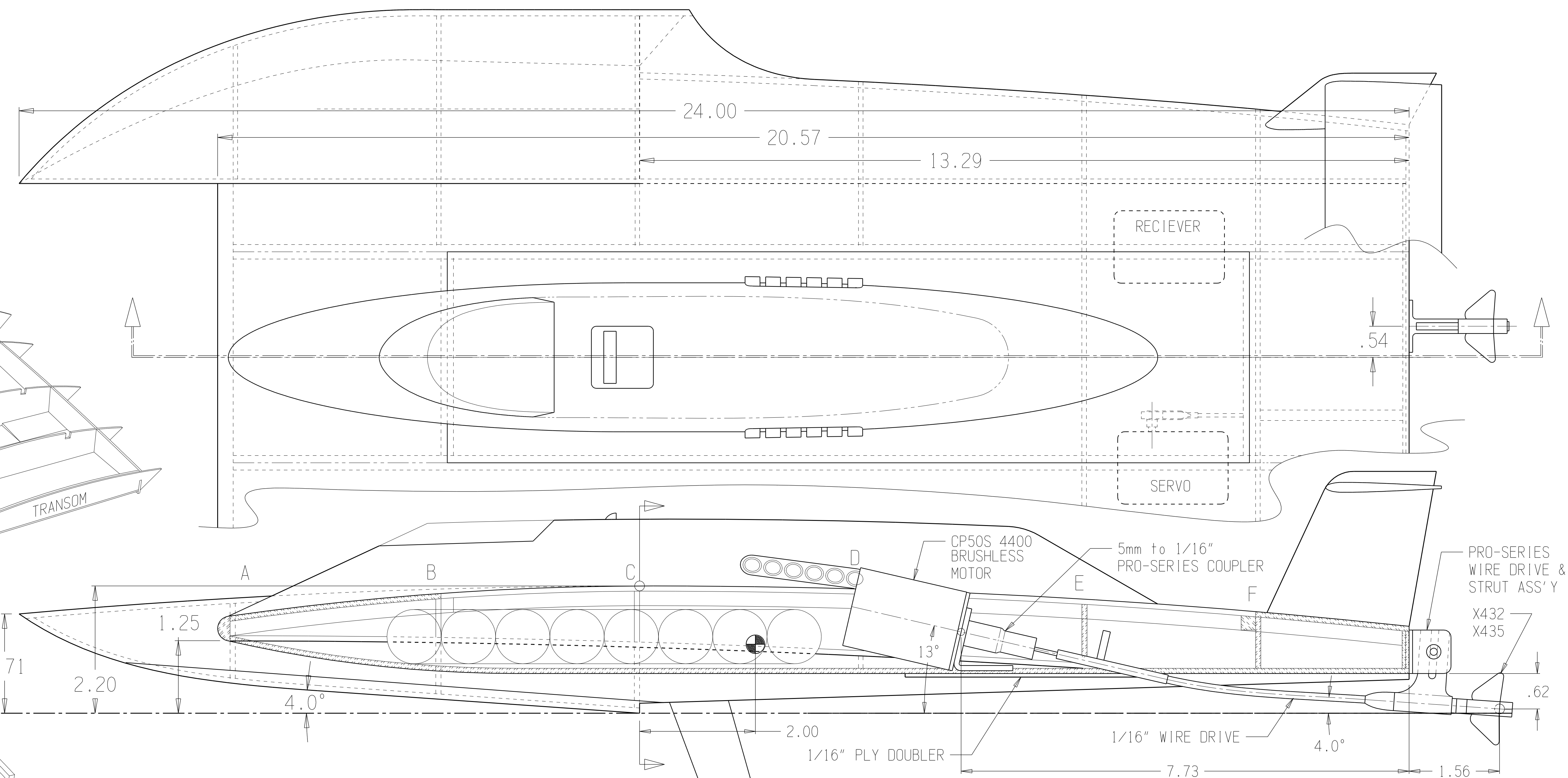
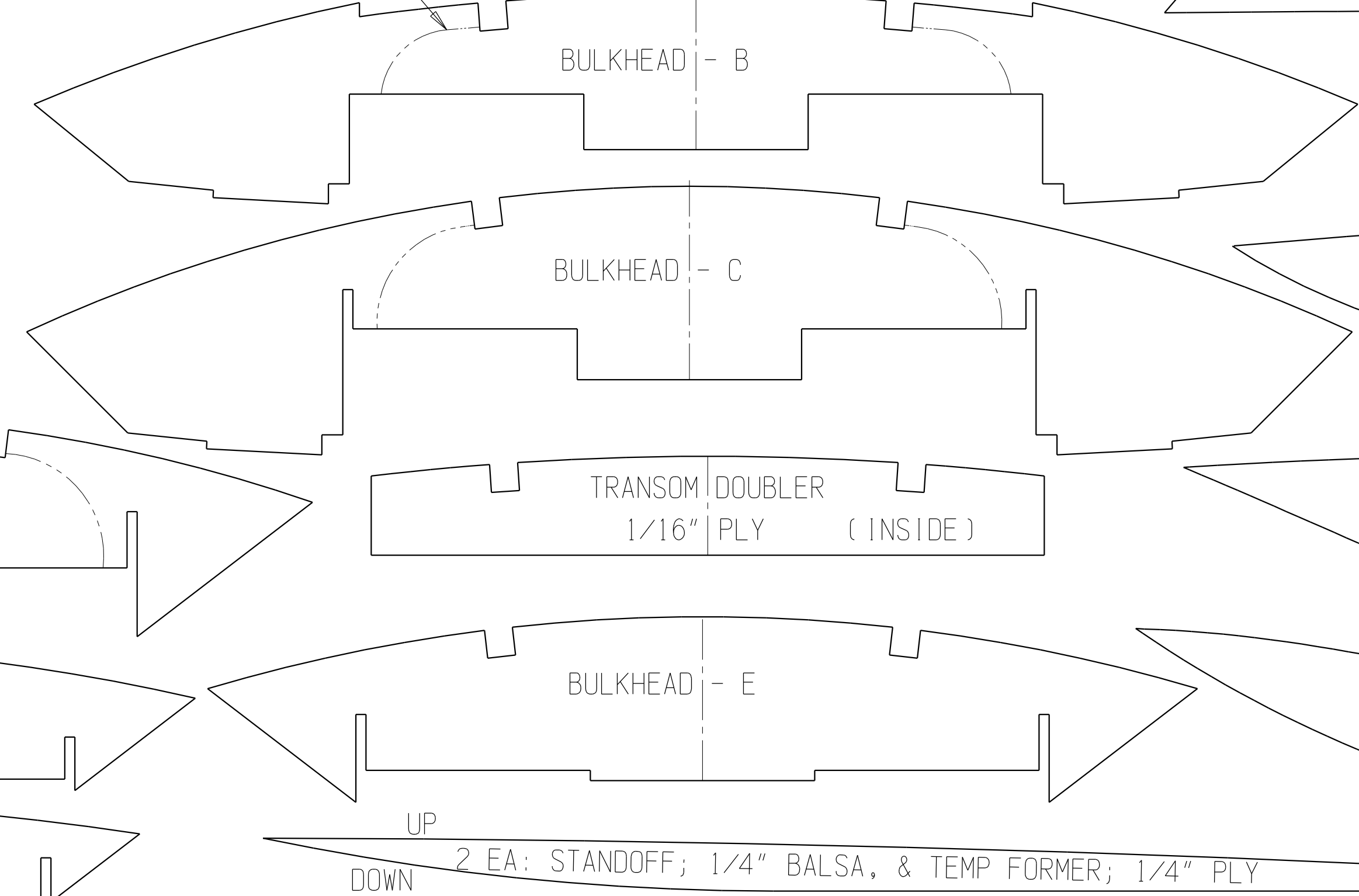
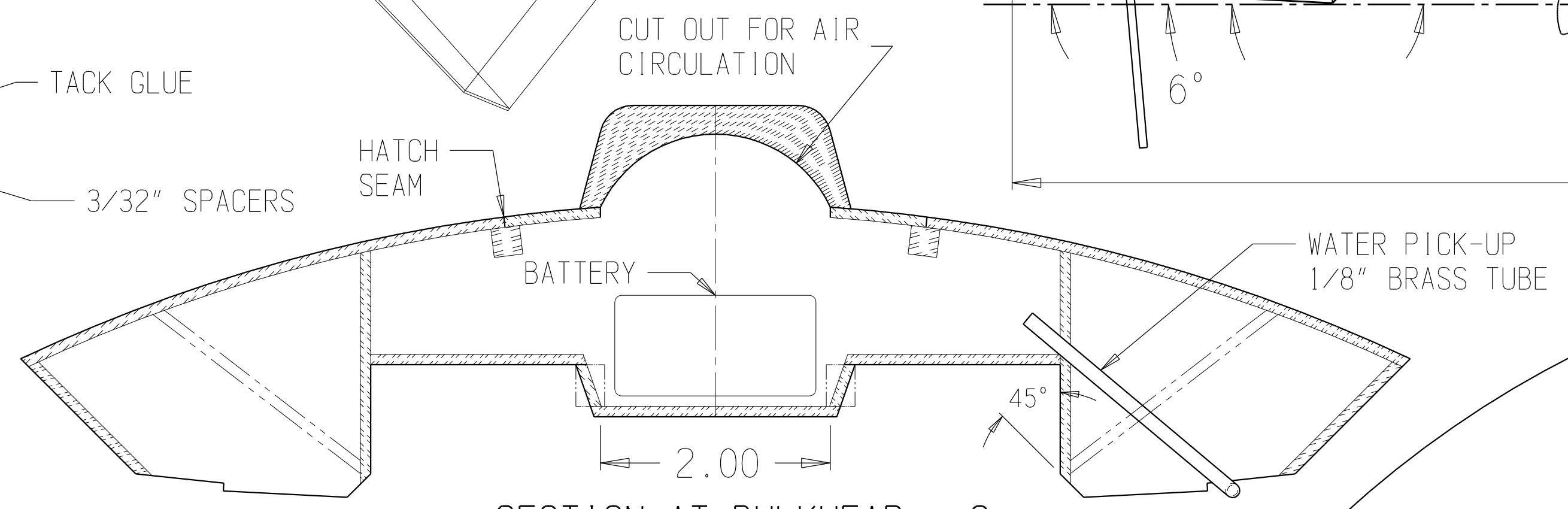
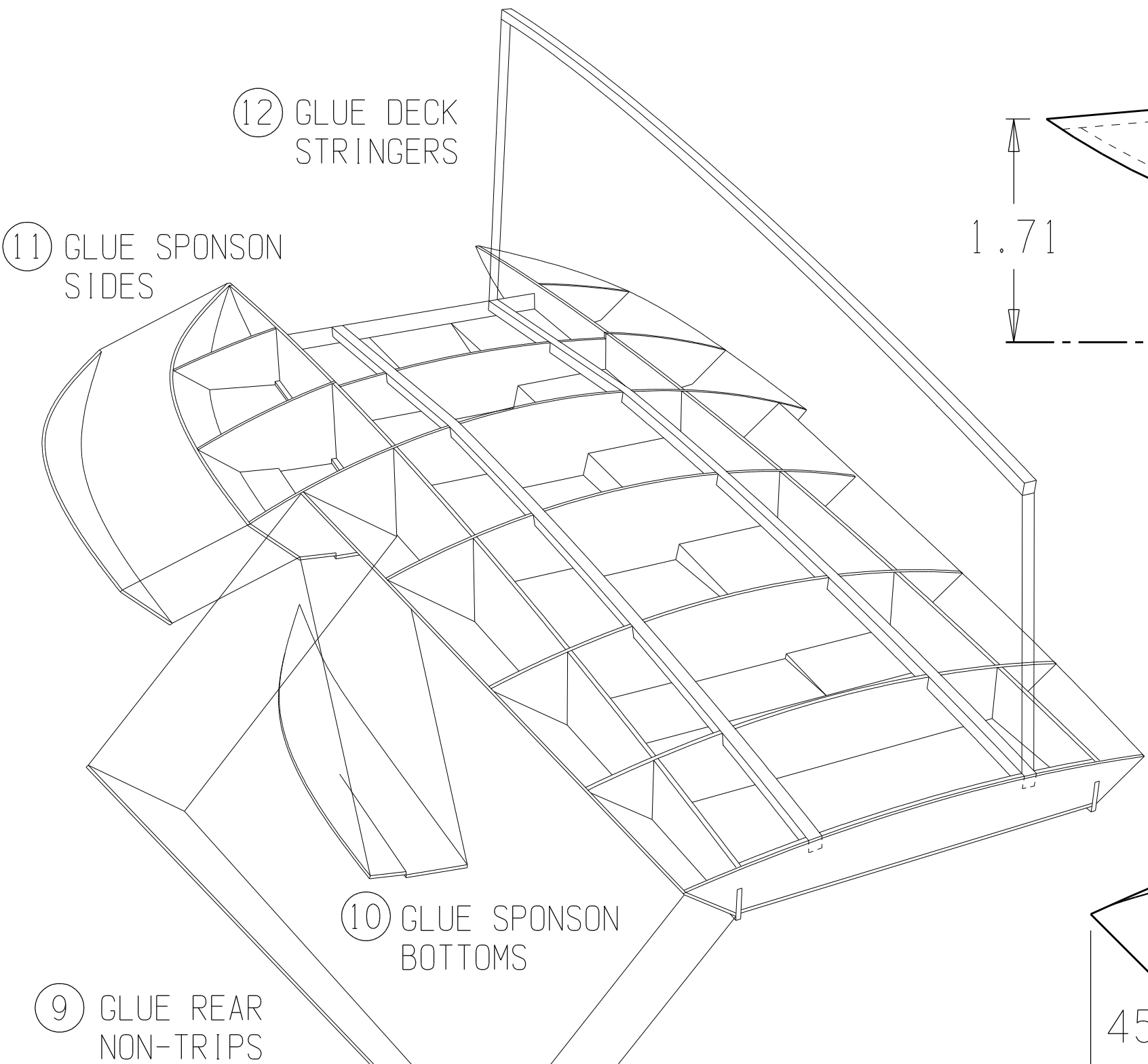
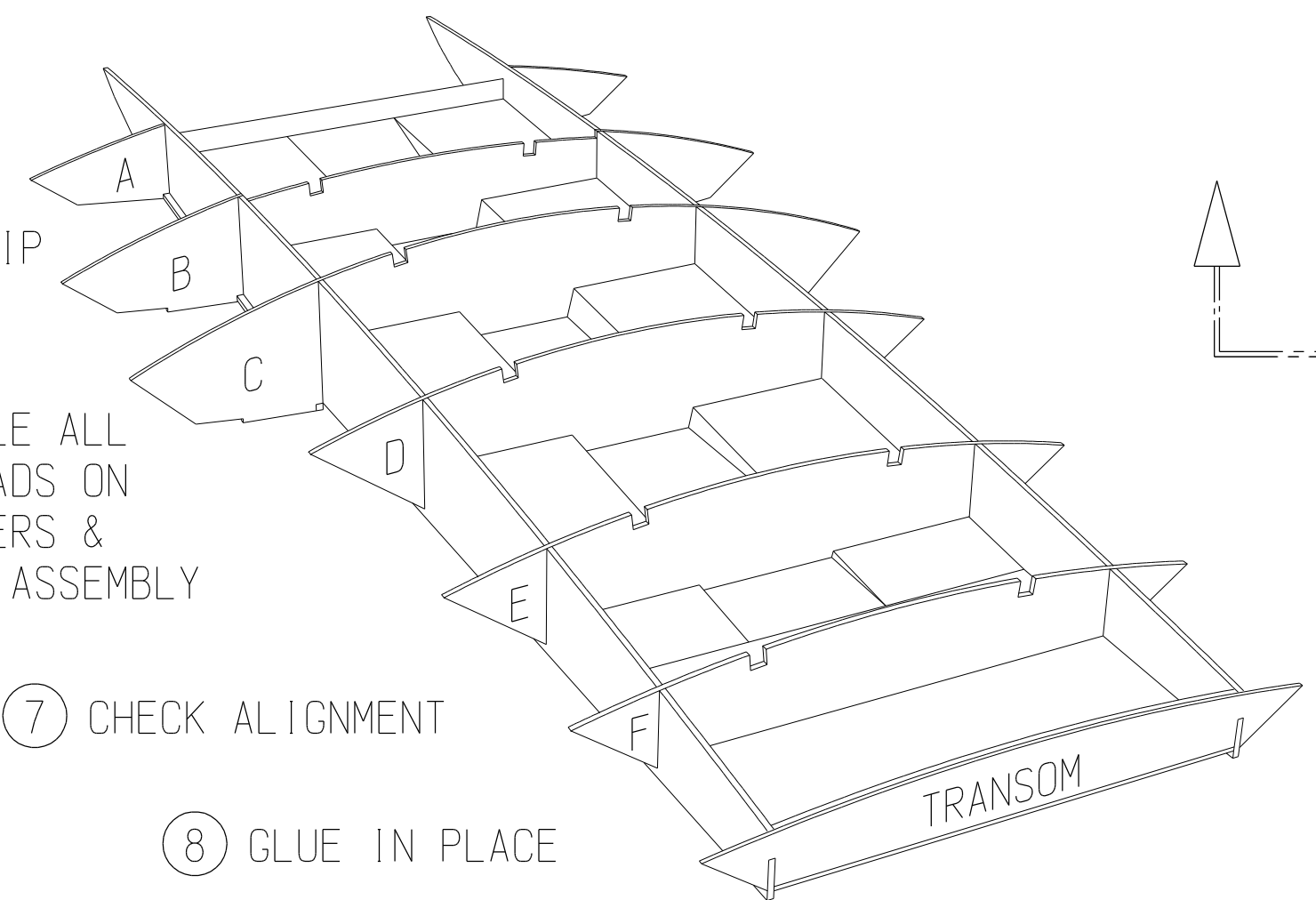
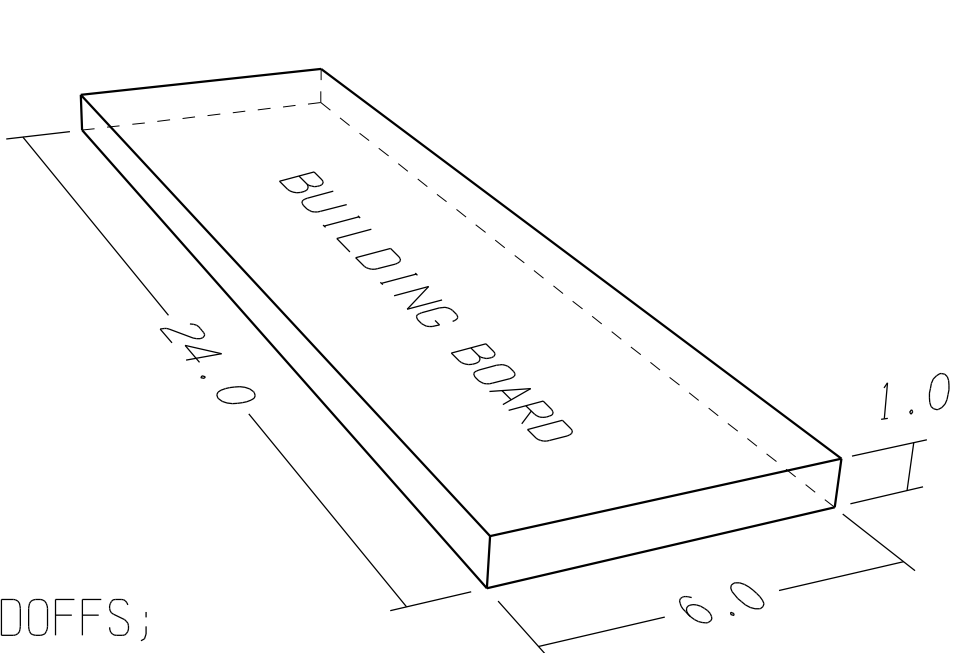
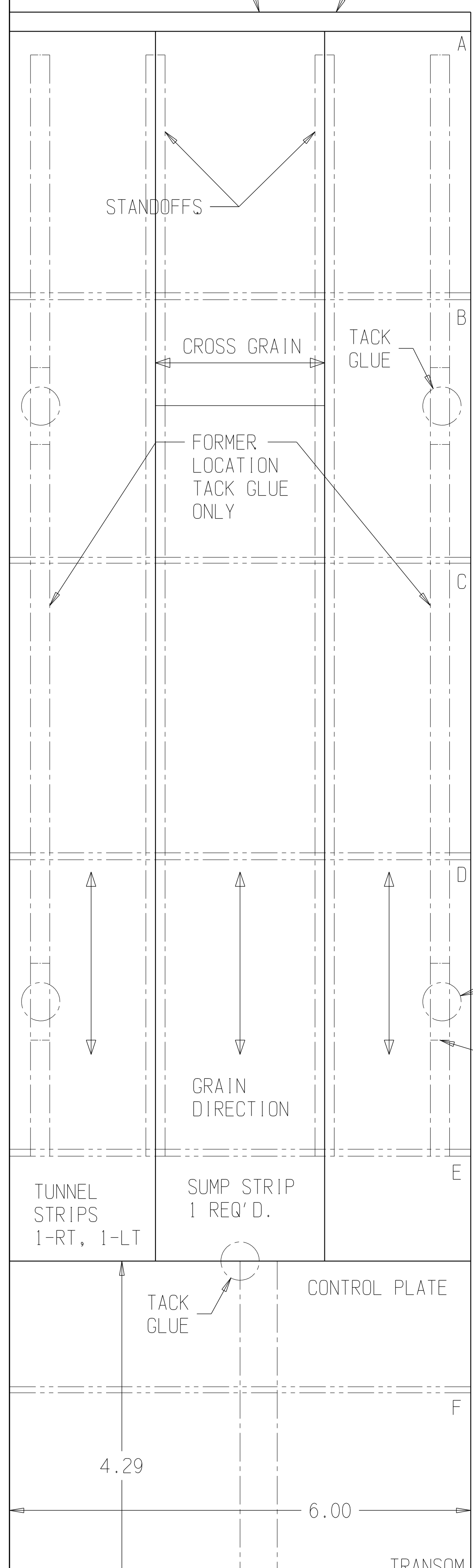
⑧ GLUE IN PLACE

⑫ GLUE DECK STRINGERS

⑪ GLUE SPONSON SIDES

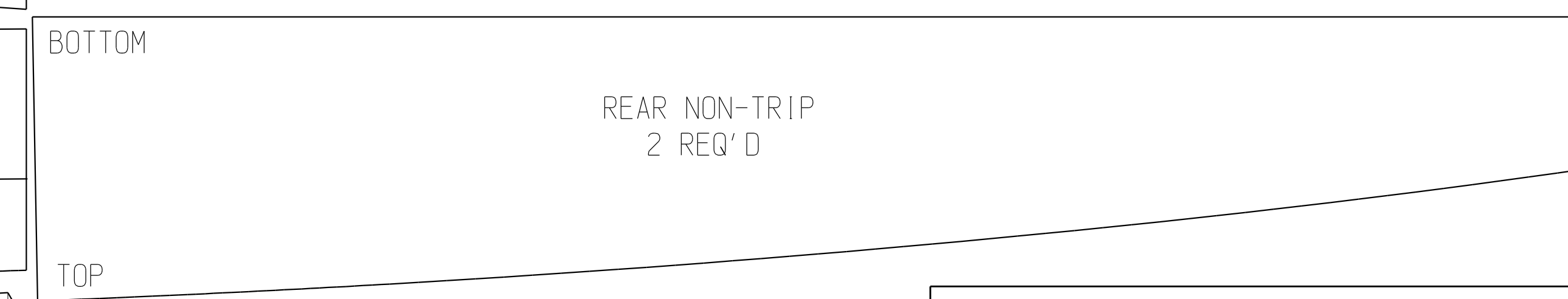
⑩ GLUE SPONSON BOTTOMS

⑨ GLUE REAR NON-TRIPS

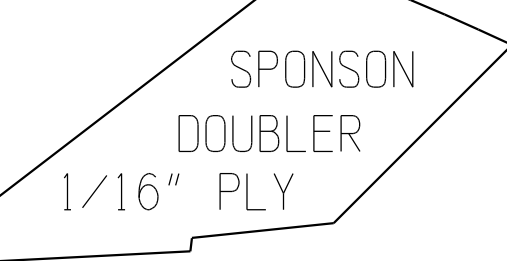


DECK: 3/32" Balsa LAMINATED WITH 1/64" BIRCH PLY 2 REQ'D

STRINGER 2 REQ'D



SPONSON BOTTOM: 3/32" Balsa LAMINATED WITH 1/64" BIRCH PLY - 2 REQ'D



UNLESS OTHERWISE NOTED: ALL DRAWINGS, FULL SCALE DIMENSIONS ARE IN INCHES

ALL SHEETS: 3/32 FIRM Balsa GRAIN DIRECTION

1/14th SEMI-SCALE
Atlas Van Lines
O SPORT HYDRO (light-weight version)
09/16/04 by: Garry Finlay